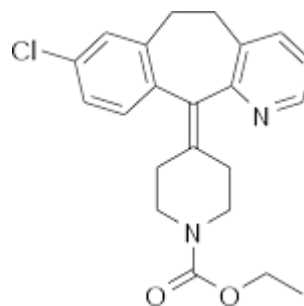




Product Name : LORATADINE



Product Description : Loratadine is a second-generation H1 histamine antagonist drug used to treat allergies. Structurally, it is closely related to tricyclic antidepressants, such as imipramine, and is distantly related to the atypical antipsychotic quetiapine.

Chemical Formula : Ethyl

4-(8-chloro-5,6-dihydro-11H-benzo[5,6]cyclohepta[1,2-b]pyridin-11-ylidene)-1-piperidinecarboxylate

CAS No : 79794-75-5

Molecular Formula : C₂₂H₂₃ClN₂O₂

Molecular Weight : 382.88