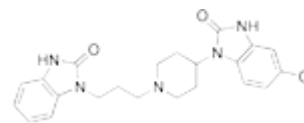




Product Name : DOMPERIDONE



Product Description : Domperidone is an antidopaminergic drug, used

orally, rectally or intravenously, generally to suppress nausea and vomiting, as a prokinetic agent and for promoting lactation. Domperidone is used, together with metoclopramide, cyclizine, and 5HT₃ receptor antagonists (such as granisetron) in the treatment of nausea and vomiting.

Domperidone is a first choice antiemetic. It can be used in patients with Parkinson's disease because, unlike metoclopramide, domperidone does not cross the blood–brain barrier. Domperidone is also used in the treatment of gastroparesis, a stomach motility condition, and for paediatric gastroesophageal reflux (infant vomiting). The drug may also be used "to prevent gastrointestinal symptoms associated with the use of dopamine agonist antiparkinsonian agents". The hormone prolactin stimulates lactation in humans, and its release is inhibited by the dopamine secreted by the hypothalamus. Domperidone, by acting as an anti-dopaminergic, results in increased prolactin secretion, and thus promotes lactation.

Chemical Formula :

5-chloro-1-(1-[3-(2-oxo-2,3-dihydro-1H-benzo[d]imidazol-1-yl)propyl]piperidin-4-yl)-1H-benzo[d]imidazol-2(3H)-one

CAS No : 57808-66-9



Chandraprabhu Pharma Services

Molecular Formula : C₂₂H₂₄CIN₅O₂

Molecular Weight : 425.911